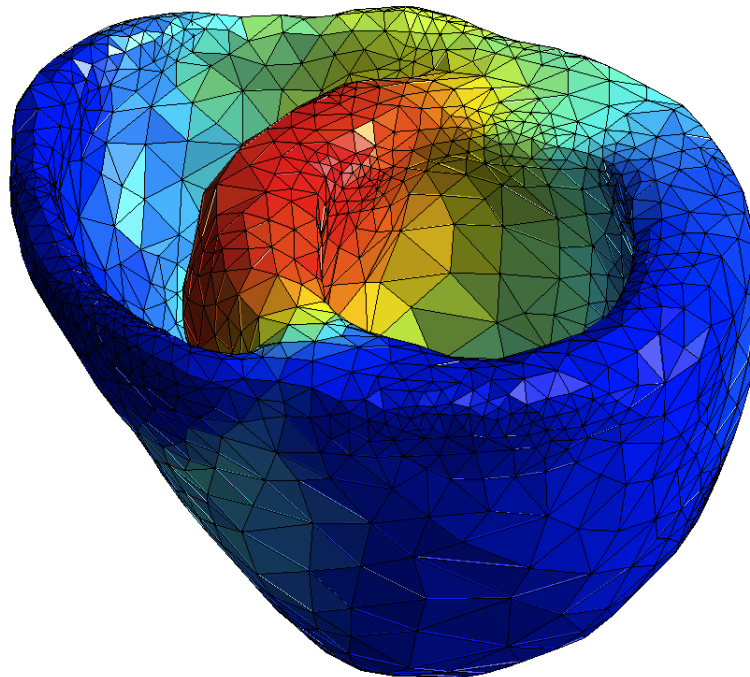


UNIVERSITÀ CATTOLICA DEL S. CUORE  
Dipartimento di Matematica e Fisica “Niccolò Tartaglia”

# MATHEMATICAL MODELS IN CARDIAC PHYSIOLOGY



Series of lectures

Davide AMBROSI, MOX - Politecnico di Milano  
Luciano TERESI, LaMS - Università Roma Tre

31/01/2011 – 02/02/2011

Via dei Musei, 41 – 25121 BRESCIA (Italy)

Information: [a.marzocchi@dmf.unicatt.it](mailto:a.marzocchi@dmf.unicatt.it), [a.musesti@dmf.unicatt.it](mailto:a.musesti@dmf.unicatt.it)

Web page: [www.dmf.unicatt.it/cuore](http://www.dmf.unicatt.it/cuore)

## INFORMATION

The aim of the Course is to bring together people with different scientific backgrounds to learn and discuss an advanced subject in Mathematical Physics. The Course consists of 12 lectures of approximately 1 hour each; the style of the meetings is very informal.

### Topics

- Basic cardiac physiology
- Cardiac medical data images and assimilation in a simulation code
- Propagation of the electric signal in the myocardium
- Activation of the contraction of the cardiac muscle
- Fluid-wall interaction

### Program

The lectures are organized as follows (tentative):

- Monday:  
3pm–6pm (with floating ☕ break)
- Tuesday:  
9.30am–0.30pm (with floating ☕ break)  
Lunch  
3.30pm–6.30pm (with floating ☕ break)  
Social Dinner
- Wednesday:  
9am–12.00 (with floating ☕ break)

### Application

Those who are interested are kindly requested to write an e-mail to

[a.marzocchi@dmf.unicatt.it](mailto:a.marzocchi@dmf.unicatt.it) and/or [a.musesti@dmf.unicatt.it](mailto:a.musesti@dmf.unicatt.it),

in order to help us find an appropriate lecture room. No participation fee is required.

### Accommodation

Participants should make their own arrangements for accommodation. We suggest

Centro Pastorale “Paolo VI”

Via Gezio Calini, 30 - 25121 BRESCIA

Tel. +39 030 3773511

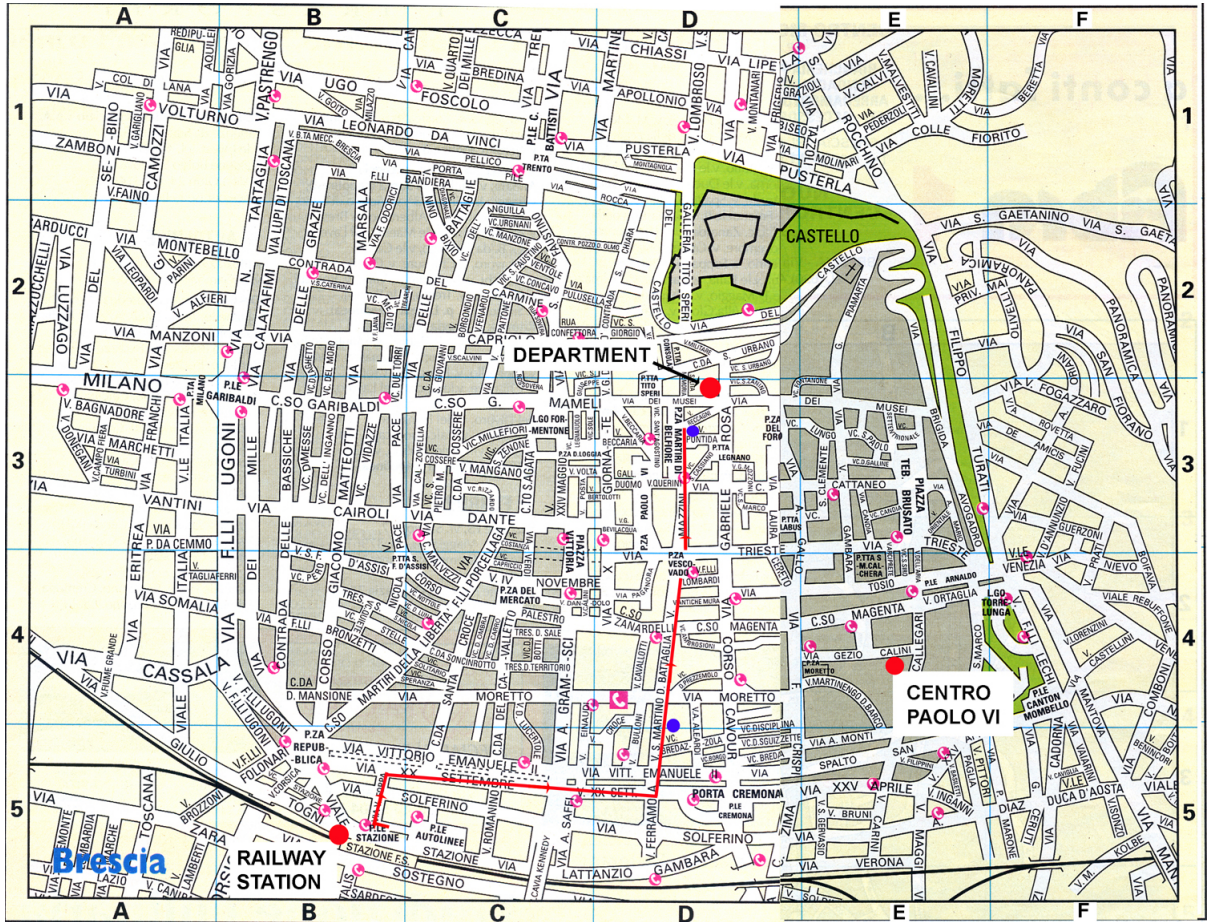
<http://www.centropastoralepaolovi.it>

### Arrival

- *to get to the department*: from the railway station, bus line n. 1 (direction “Mompiano”) or n. 2 (direction “Pendolina”) right in front of the station (tickets available at the neighbouring tobacconist’s); get off at “Belfiore”, then walk following the plan below (approximately 1 min.)
- *to get to Centro Paolo VI*: from the railway station, bus line n. 1 (direction “Mompiano”) or n. 2 (direction “Pendolina”) right in front of the station (tickets available at the neighbouring tobacconist’s); get off at “San Martino” and walk following the plan below (approximately 10 min.)

For information about bus lines, see also

[http://istituzionale.comune.brescia.it/bstrasporti/sitonew/Servizio/linee\\_percorsi\\_orari.htm#](http://istituzionale.comune.brescia.it/bstrasporti/sitonew/Servizio/linee_percorsi_orari.htm#)



Bus lines in red; bus stops in blue.